

Regional Development

IB Americas

IB Schools of Ohio

Columbus 29.9.11

Paul Campbell, Head of Regional Development

What exactly do you do?

- IB Mission
- IB Strategy
- IB Americas Objectives
- Regional Development Vision
- Regional Development Priorities

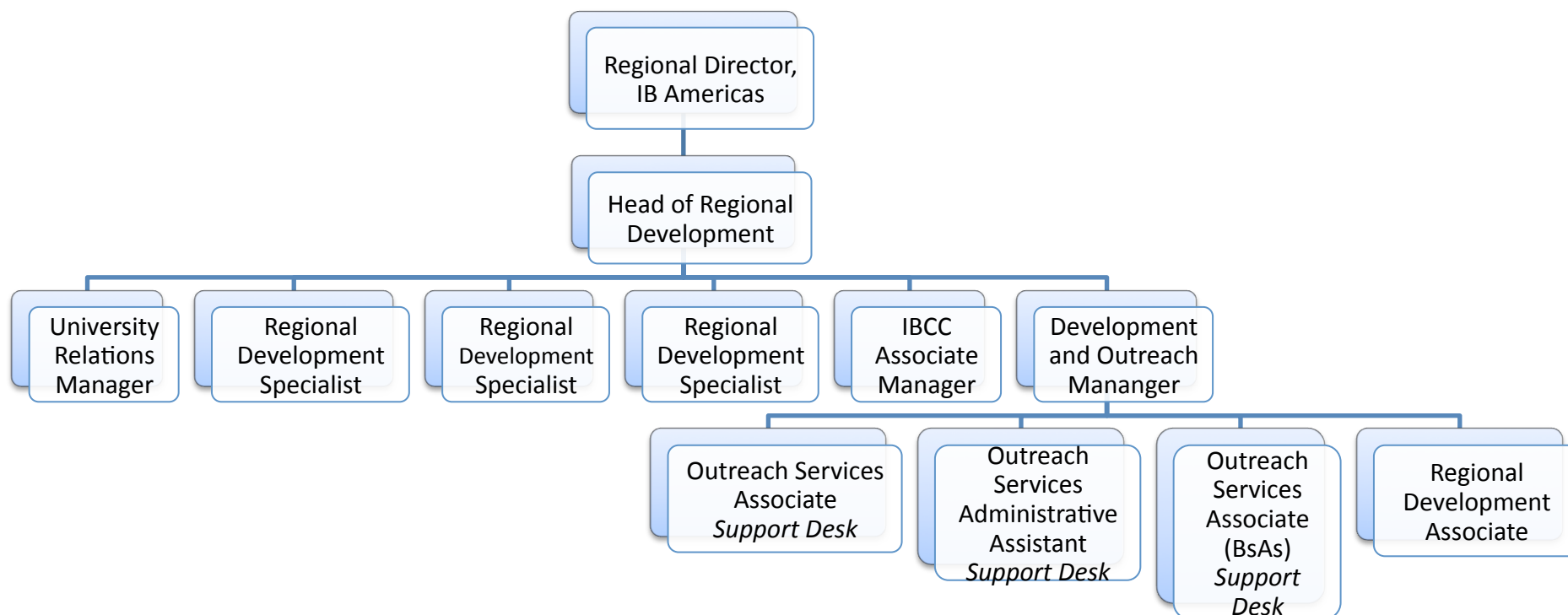


Regional Development works with a range of potential and existing stakeholders to promote access to IB programs for more students, in support of IB's mission of educational excellence and equity



We accomplish this through:

- Orientation Seminars
- Annual Regional Conference
- Association Relations
- District Services
- University Relations
- Government Relations
- Partnerships with other Educational Organizations
- Exhibits/Presentations at Professional Organizations
- Day-to-day service for interested schools
- Customer service with stakeholders
- International Baccalaureate Career-Related Certificate
- Business Community Relations



The International Baccalaureate Career- related Certificate (IBCC)

Why has the IBCC been created?

- to promote access to an IB education
- to satisfy a worldwide trend of demand for qualifications that combine academic with career-related achievement
- to promote school retention by broadening student options.

What is the IBCC?

- an IB academic qualification
- a framework of study lasting two years
- a certificate that supports schools offering local or national career-related qualifications
- ‘value added’ to the career-related qualification

What is the IBCC?

- Certificate of IB study
 - at least two DP courses
 - IBCC core
- Requires
 - language acquisition
 - concurrent completion of a career-related course
- Complements vocational study
 - answers region-specific industry needs

The Framework

- the study of at least two Diploma Programme courses
- a specially designed IBCC core recognising and emphasising IB values, missions and needs of career-related students.
- an approved career-related course
- language provision.

The Diploma Programme (DP) courses

- The DP courses can come from any of the hexagon core groups (1-6).
- The DP courses can come from the same hexagon group and can be studied at HL and/or SL.
- It is possible to study more than two DP courses depending on the nature of the career-related course and the student's timetable.
- The DP courses chosen should complement the students career-related field of study.

The Core

- community and service
- approaches to learning
- reflective project

The core is used to link the IB subjects with the career-related course.

“All employers are looking for young people with strong career-specific skills and employability skills: [...]”

Authorization Process

Consideration Phase

- School submits online Expression of Interest form

Request for Candidacy

- School submits Application for Candidacy: IBCC

Request for Authorization

- School begins working with remote consultant (10 hours)
- School submits Application for Authorization: IBCC

IBCC Fees and Services

- **One Time Application Fee**

- application reading
- ten hours of remote support from a consultant
- two seats in online IBCC professional development
- verification site visit

Application fee is \$8500 (will be reduced to \$7500 for schools committing to apply in 2011)

IBCC Fees and Services

- **Annual School Fee**
 - Curriculum development and research
 - Regional and academic support
 - Registration fee and subject fees for two DP courses per student
 - Moderation of reflective project

Annual fee is \$1000 per annum and a per capita fee of \$220 per year (per student).

References

- CBI. 2010. *Ready to Grow- Education and Skills Survey 2010*. UK.
- Halliday, J. 2000. *Critical Thinking and the Academic Vocational Divide*. Curriculum Journal 11:2, 159-175. University of Strathclyde, UK.